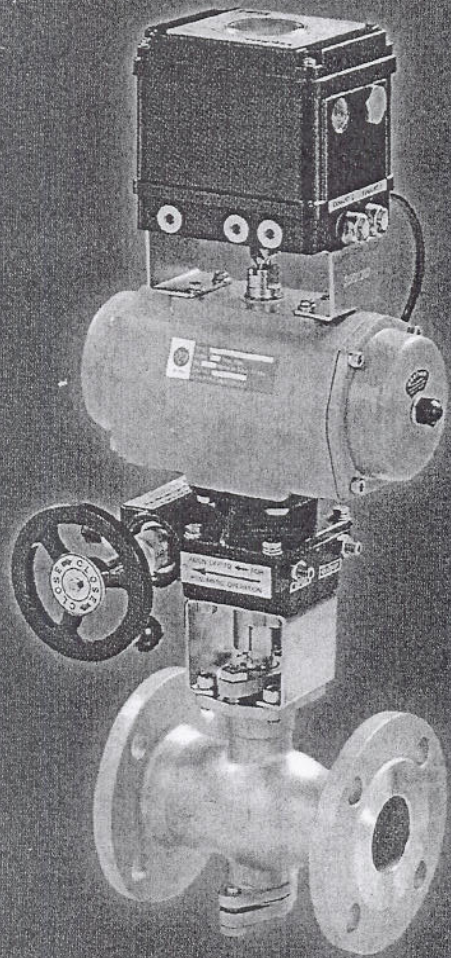


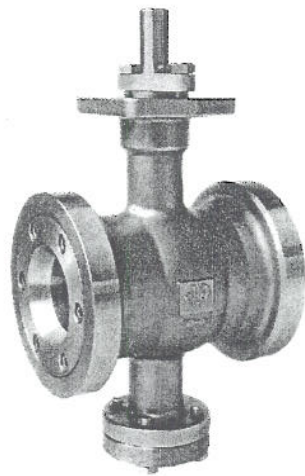
V-Port Segment Control Valve



The JSB Series of rotary valve is the throttling control ball valve that provides high valve capacity with optimum flow characteristic for wide industrial services such as Pulp and Paper, Refinery, Chemical, and Petrochemical Industries.

Product Features

1. 1-PC body design prevents leakage
2. V-Ball provides large straight pass of fluid with solid particles.
3. V-Ball with top and bottom bearings offers low torque operation
4. Rotary-valve design provides cutting to the particles in fluid between the v- ball and the seat enables the fluid to pass smooth without obstruction.
5. Spring supported metal seats
6. Interchangeable soft seats and metal seats satisfy different applications. Seats can be changed easily and directly by simple steps.
7. Automatic pressure relief design
8. Nearly equal percentage flow characteristic.
9. Available in flangeless or flange connection.
10. Integral mounting pad
11. Anti-static device
12. Easily removed cap design simplifies the procedure of changing inner parts.



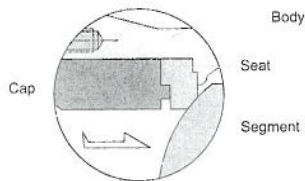
Applications

1. Slurry and viscous fluid
2. Powder and particles in fluid
3. Chips and fibers in pulp and paper process
4. Flow control
5. Pressure control

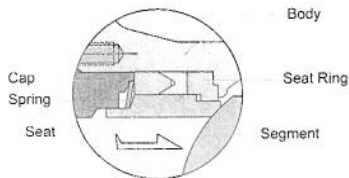
V-Port Segment Valve

Feature 7

Interchangeable seats

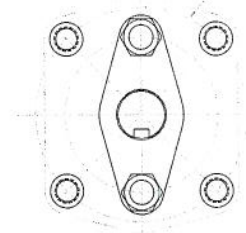


SOFT SEAT



METAL SEAT

ISO 5211 Mounting Pad



Feature 11
Integral mounting pad

Optional flangeless or
flange connections

Feature 1
1-PC Body design

Feature 12
Easily removed cap design

Feature 2
Segment ball with
bearing design on
top and bottom
enables the operation
torque to be lower.

Segment ball with V-cut offers excellent
flow volume control

